

EXHIBIT "A"

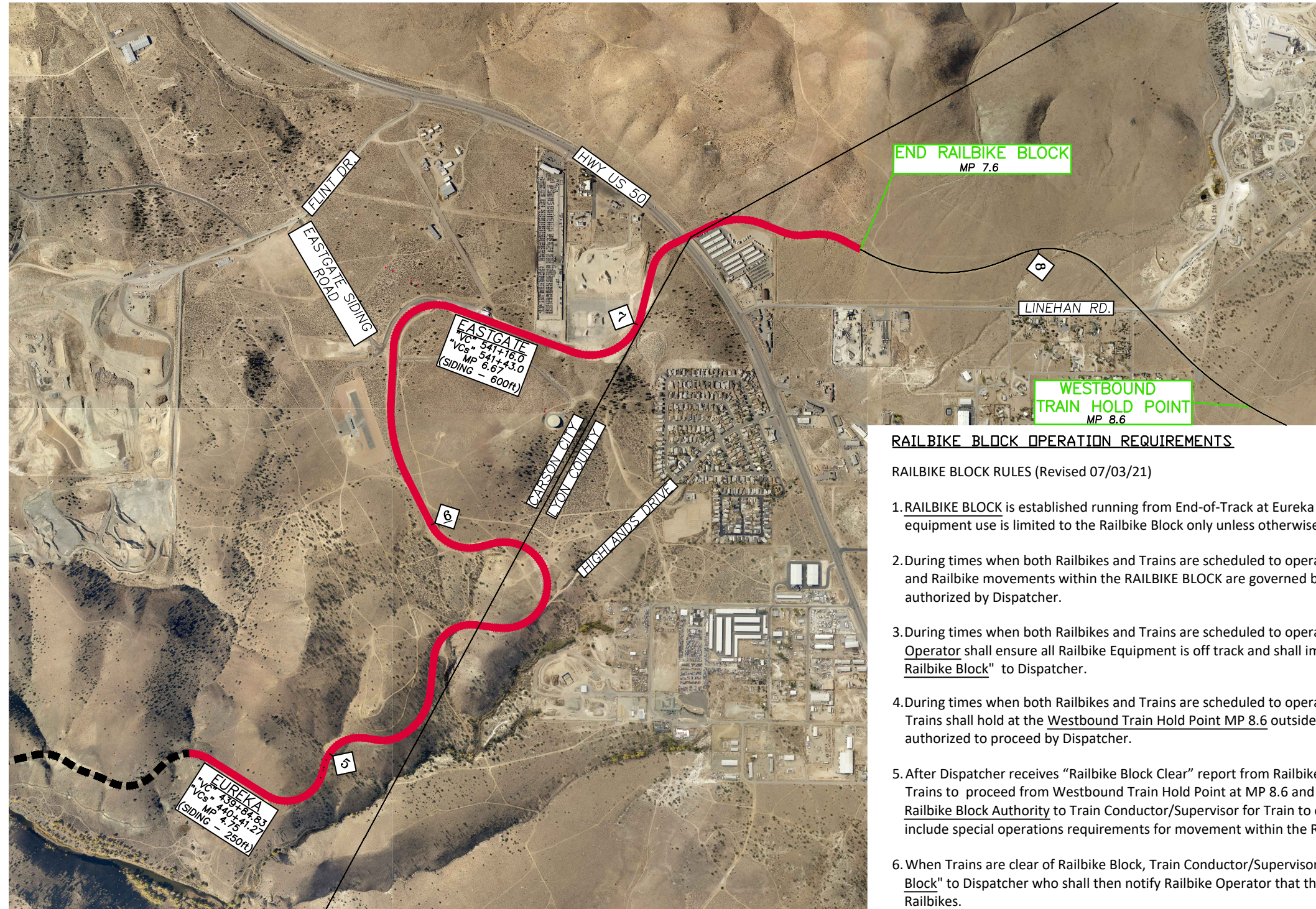
REVISED 07/03/21

VTRW MAINLINE

← TO EUREKA
TIMETABLE WEST

TO GOLD HILL
TIMETABLE EAST →

1"=1000'



2013 AERIAL PHOTO

END RAILBIKE BLOCK
MP 7.6

WESTBOUND
TRAIN HOLD POINT
MP 8.6

RAILBIKE BLOCK OPERATION REQUIREMENTS

RAILBIKE BLOCK RULES (Revised 07/03/21)

1. RAILBIKE BLOCK is established running from End-of-Track at Eureka to MP 7.6. Railbike and Railbike Support equipment use is limited to the Railbike Block only unless otherwise authorized by Dispatcher.
2. During times when both Railbikes and Trains are scheduled to operate within the RAILBIKE BLOCK, all Train and Railbike movements within the RAILBIKE BLOCK are governed by DIRECT TRAFFIC CONTROL (DTC) as authorized by Dispatcher.
3. During times when both Railbikes and Trains are scheduled to operate within the RAILBIKE BLOCK, Railbike Operator shall ensure all Railbike Equipment is off track and shall immediately report "Railbikes are Clear of Railbike Block" to Dispatcher.
4. During times when both Railbikes and Trains are scheduled to operate within the RAILBIKE BLOCK, Westbound Trains shall hold at the Westbound Train Hold Point MP 8.6 outside Linehan Road Signal Circuit until authorized to proceed by Dispatcher.
5. After Dispatcher receives "Railbike Block Clear" report from Railbike Operator, Dispatcher shall authorize Trains to proceed from Westbound Train Hold Point at MP 8.6 and enter Railbike Block thru issuance of Railbike Block Authority to Train Conductor/Supervisor for Train to occupy Railbike Block. Dispatcher may include special operations requirements for movement within the Railbike Block.
6. When Trains are clear of Railbike Block, Train Conductor/Supervisor shall report "Train is Clear of Railbike Block" to Dispatcher who shall then notify Railbike Operator that the Railbike Block can now be used by Railbikes.

INITIAL PLAN
(subject to revision by VTRW Bulletin)

RAILBIKE BLOCK PLAN

REVISION#	BY	DATE	DESCRIPTION

LEGEND
 RAILBIKE BLOCK – EUREKA TO MP 7.6 —————
 EXISTING VTRW TRACK OUTSIDE RAILBIKE BLOCK —————
 PROP VTRW TRACK - - - - -

DRAWN BY: KLD
 CHECKED BY:
 DATE: 07/03/21
 SHEET NUMBER
 1 OF 1

THE NEVADA COMMISSION FOR THE RECONSTRUCTION OF THE V&T RAILWAY (VTRW)
 LOCATION & DESCRIPTION:
 EASTGATE AREA – VTRW MAINLINE & SIDINGS
 CARSON CITY AND LYON COUNTY, NV.

KL DORR CONSULTING LLC
 2720 GOLD MINE CT.
 RENO, NV 89521
 (775) 721-2020
 ken.dorr@gmail.com

